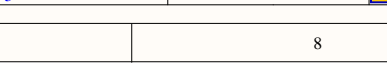
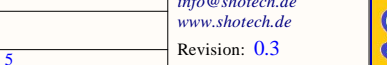
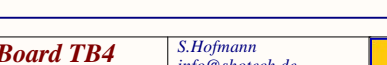
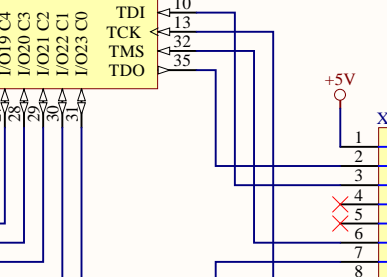
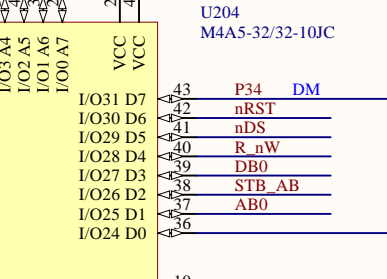
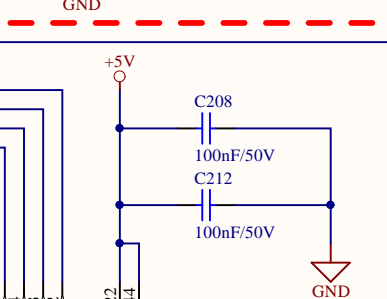
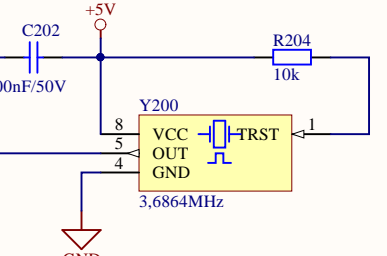
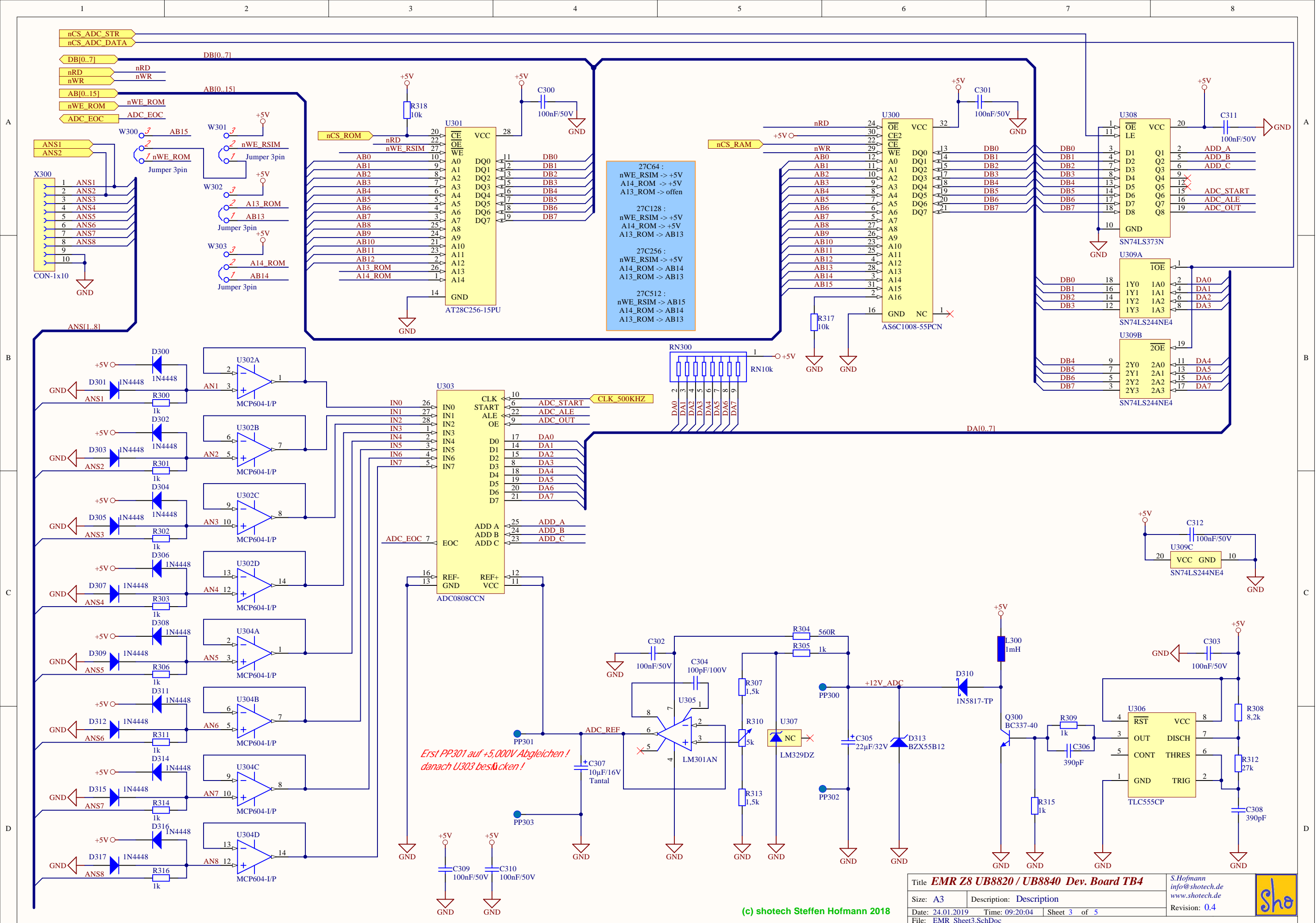


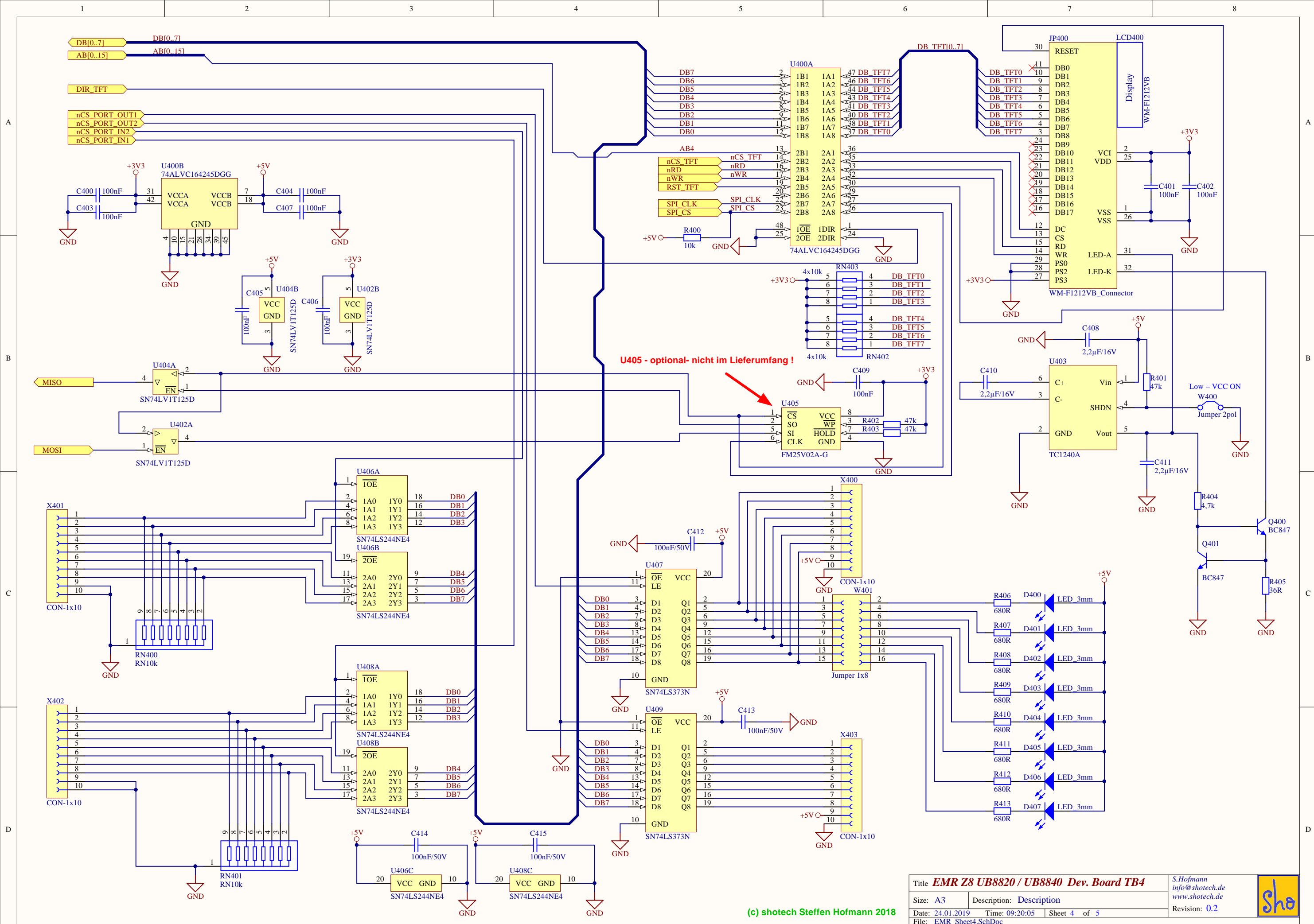
Nur für Emulator
optional- nicht im Lieferumfang !

R_nW	1	2	P25
P26	3	4	P27
AD4	5	6	AD5
AD6	7	8	AB12
AB13	9	10	AD7
AB15	11	12	AB14
AB15	13	14	
P32	15	16	P31
P34	17	18	P33
nRST	19	20	nAS
TX_UB	21	22	P35
RX_UB	23	24	P36
AD1	25	26	AD0
AB9	27	28	AB8
AB11	29	30	AD2
P20	31	32	AB10
P22	33	34	AD3
P24	35	36	P21
	37	38	P23
	39	40	nDS

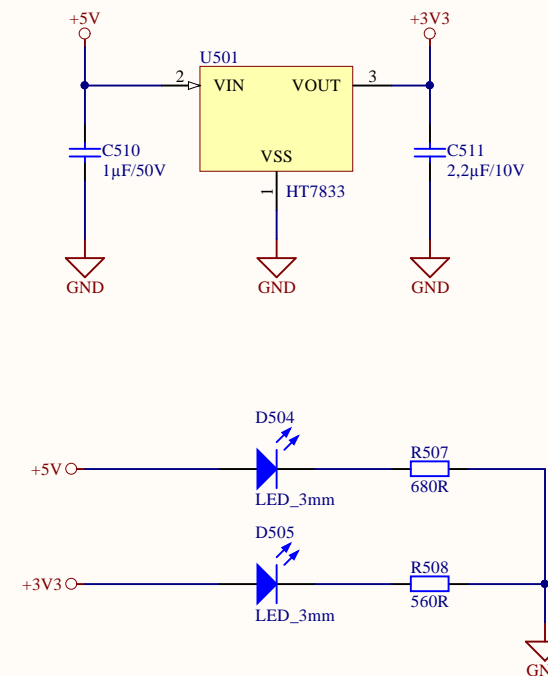
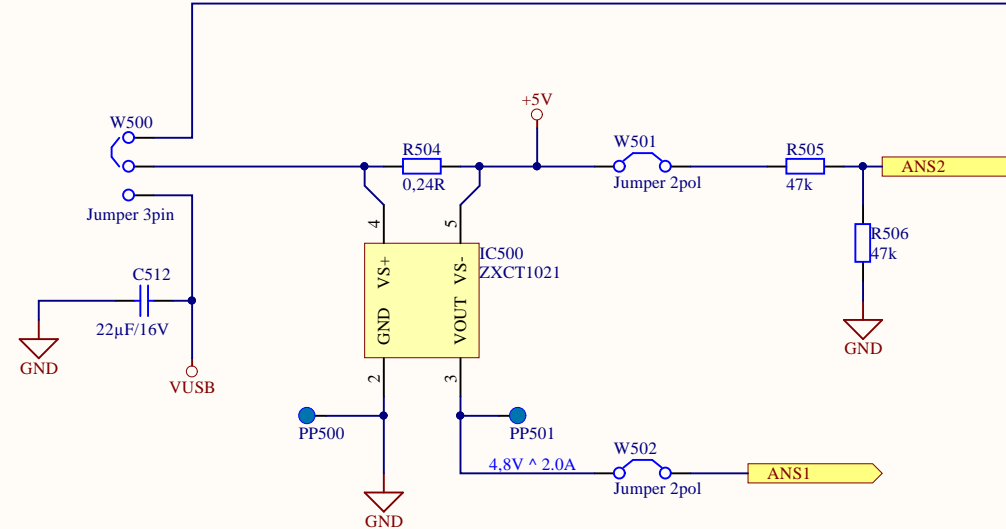
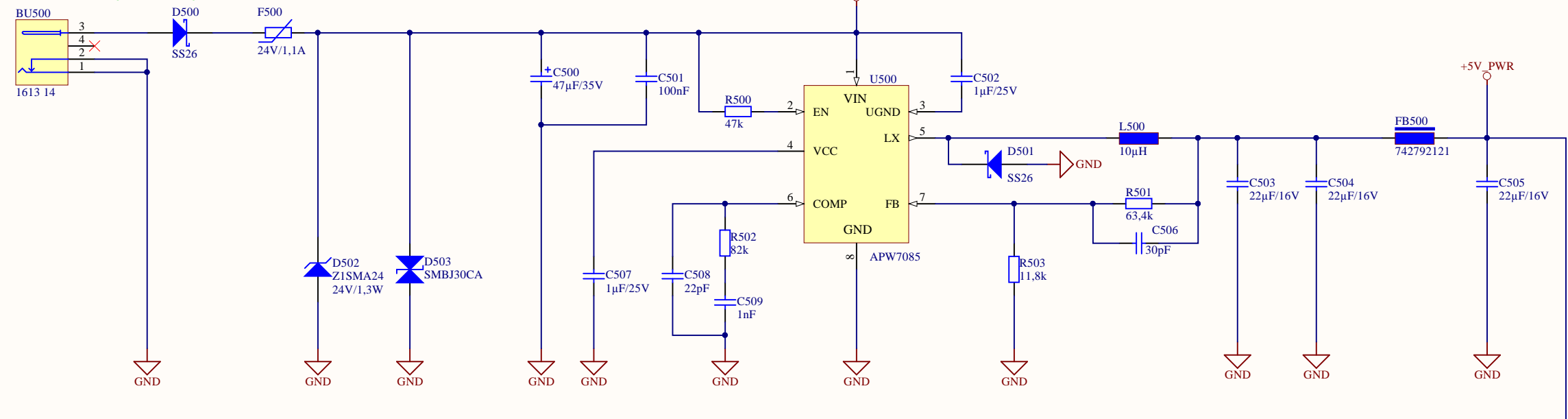
WSL 40G
Z8 CCP EMU (Z86E40)

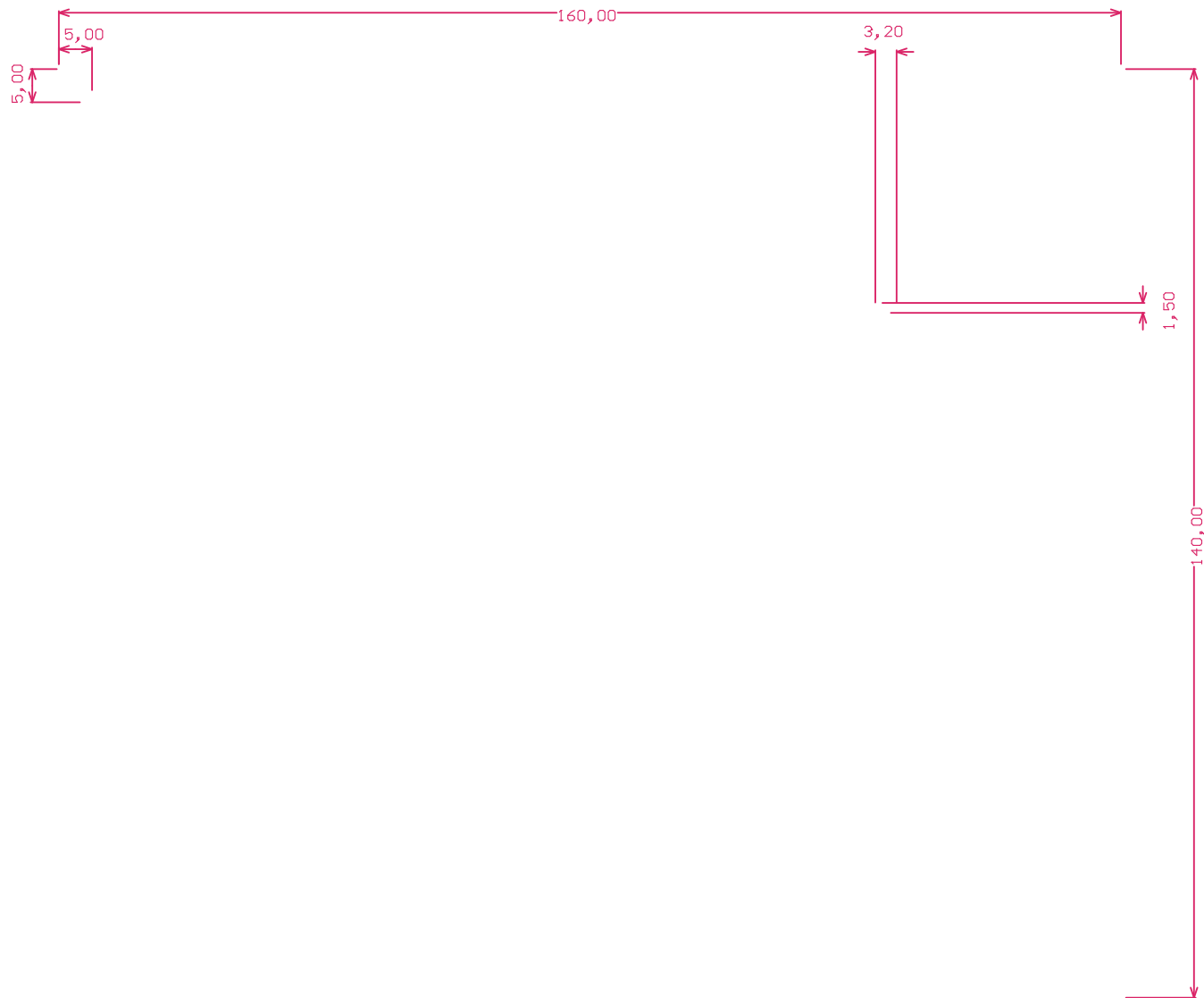




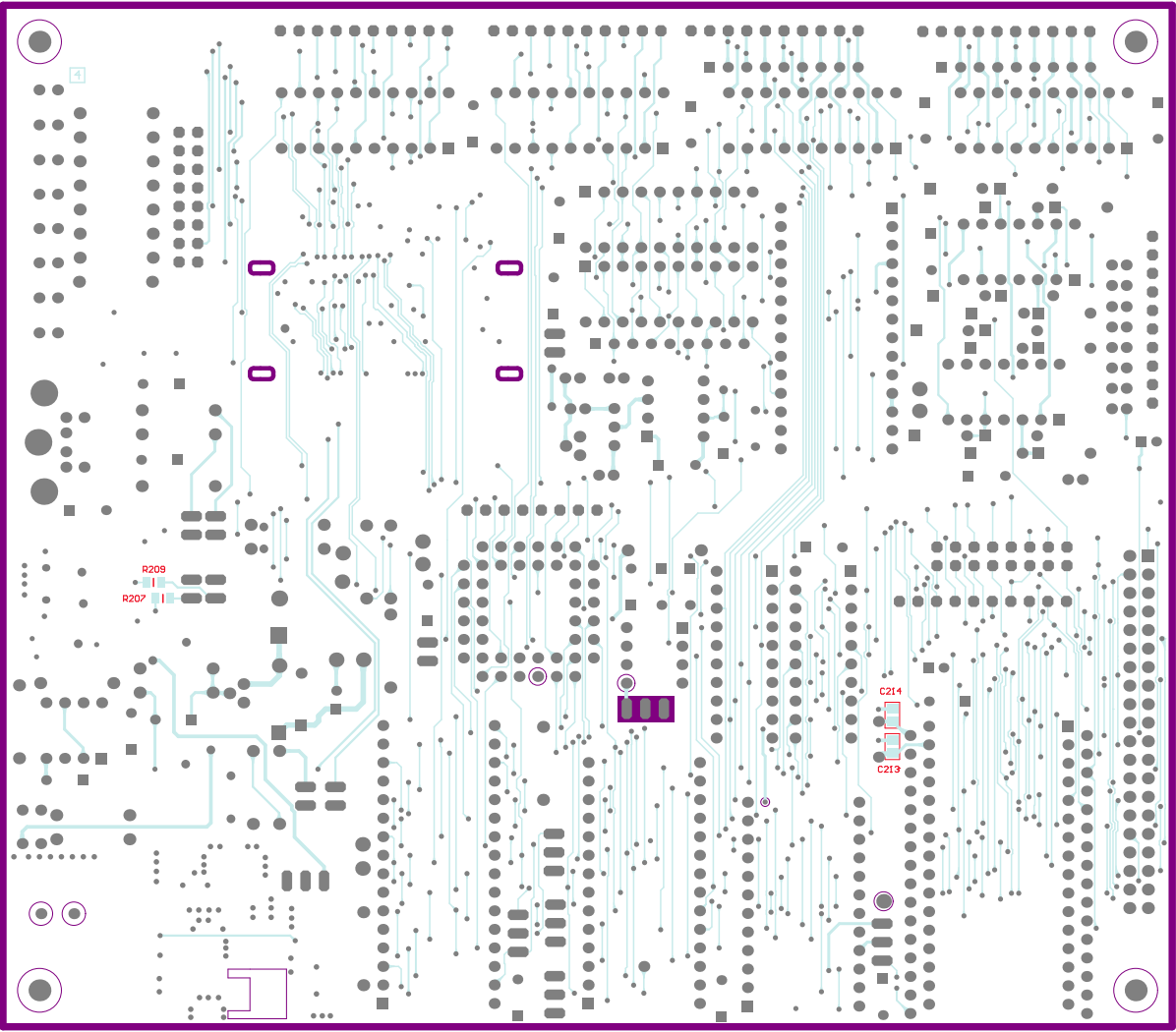


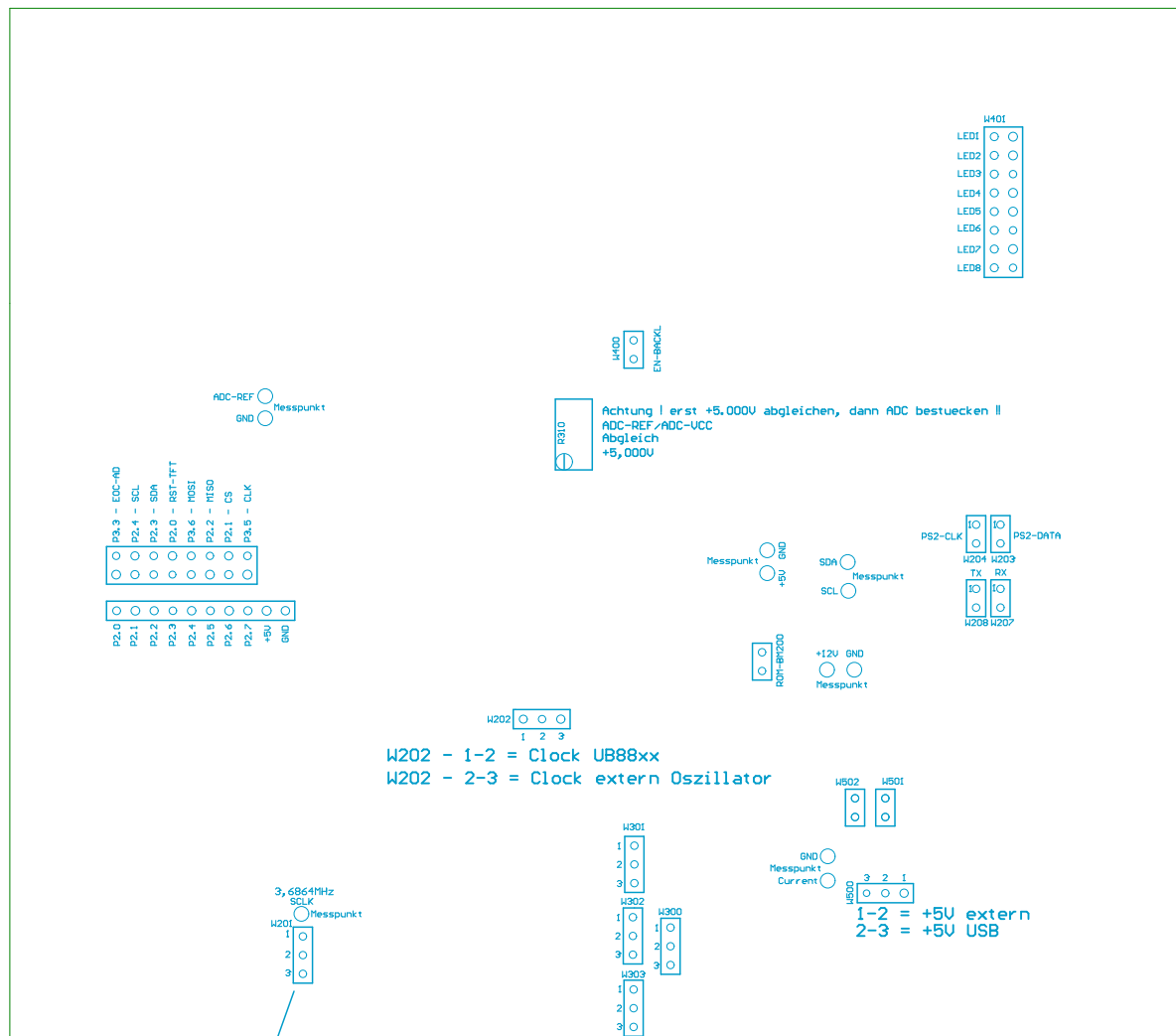
+8V ... +12V (max. +22V)





	EMR-UB88xx-TB4 Board
A4	(C) shotech Steffen Hofmann





1-2 = U2716
2-3 = U2732

EPROM Simulator Mode (32KB) Enable/Disable Simulator in ASM:
W300 = 1-2 LD R0, #high(FF03h)
W301 = 1-2 LD R1, #low(FF03h)
W302 = 1-2 LD R2, #1 ; = 1 Enable , = 0 Disable
W303 = 1-2 LDE @R0, R2

W501 - Jumper AD-Converter = UCC
W502 - Jumper AD-Converter = Current