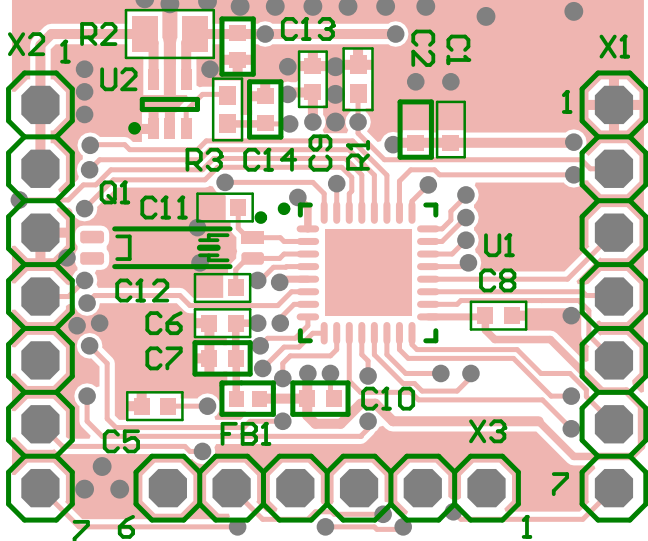
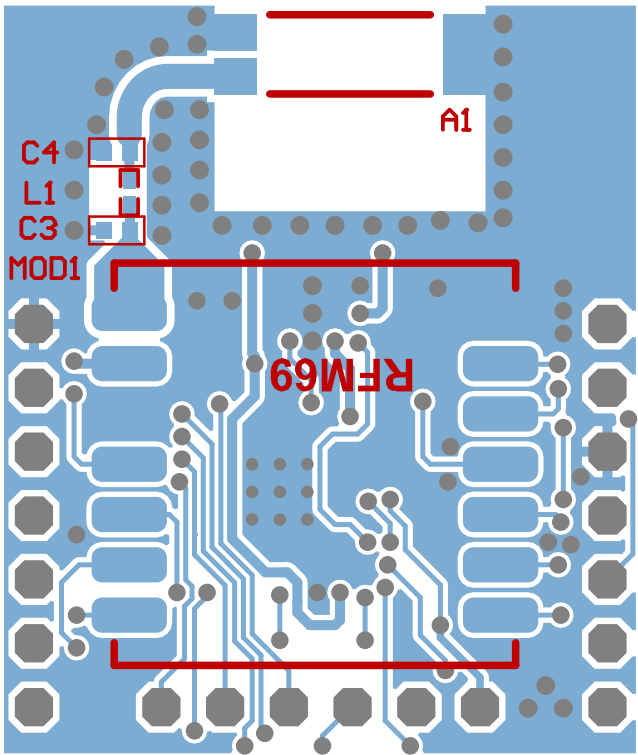




Rev. 0.2

RFM69CW-868
CM0-Plus
RF-Modul







Bearbeiter: S. Hofmann
Tel: 040 /
Fax: 040 / 76906856
Email: shop@shotech.de

Bill of Materials

Datum:	15. Juli 2019
Zeit:	16:59:21
Variant:	None
Bezeichnung:	RFM69CW-Adapter
Revision:	0.0

Quantity	Designator	Footprint	Bemerkung	Value	MFT	Order-code	shotech
1	A1	W3013	868 MHz chip antenna	W3013	Pulse	W3013	000609
5	C1, C5, C6, C8, C9	C0402_N	0402/100nF/16V/10%/X7R	100nF	Samsung Electronics	CL05B104KO5NUNC	000172
2	C2, C10	C0402_MUR	10µF ±20% 6,3V Keramikkondensatoren X5R 0402	10µF/6,3V	Murata	GRM155R60J106ME44D	000673
1	C3	C0402_N	4pF, COG, +,- 0,25pF, 0402	0pF/N.C	Murata		
1	C4	C0402_N	8,2pF ±0,25pF 50V Keramikkondensatoren C0G, NP0 0402	8,2pF	Murata	GRM1555C1H8R2CA01D	000366
3	C7, C13, C14	C0402_MUR	1µF ±10% 6,3V Keramikkondensatoren X5R 0402	1µF/6,3V	Murata	GRM155R60J105KE19D	000672
2	C11, C12	C0402_N	3,9pF, 50V, NPO, +,- 0,1pF, 0402	3,9pF	YAGEO	CC0402BRNPO9BN3R9	001362
1	FB1	F0402_MUR		BLM15AG221SN1D	Murata	BLM15AG221SN1D	000779
1	L1	INDC1005X04L	100nH Unshielded Multilayer Inductor 150mA 1.25 Ohm Max 0402	0nH/N.C	Murata	LQG15HSR10J02D	
1	LP1			LP-RFM69CW_MCU_868	shotech	RFM69CW-Panel - Multi	001361
1	MOD1	RFM69CW	ISM RF-Modul	RFM69CW	Hope-RF	RFM69CW	
1	Q1	SSP-T7	Kristalle 32,768kHz 20ppm 7pF 65 kOhm -40°C bis 85°C	XTAL 32.768KHZ	Seiko Instruments	SSPT7F-7PF20-R	000356
1	R1	R0402_N	0402, 1%	47k	Yageo	RC0402FR-0747KL	000784
1	R2	R0805_N	RES SMD 1 OHM 1% 1/8W 0805 current Sense	1R	Panasonic	ERJ6RQF1R0V	000782
1	R3	R0402_N	0402, 1%	10k	Yageo	RC0402FR-0710KL	000783
1	U1	QFN50P500X500X60_HS-33N	Cortex-M0+, up to 64KB, Flash, 8KB SRAM, 2KB EEPROM, USB	STM32L051K8U6	ST-Microelectronic	STM32L051K8U6	000584
1	U2	SOT65P210X110-5N	Precision Current-Sense Amplifier	MAX9610	Maxim Integrated	MAX9610TE XK+T	000272
2	X1, X2	1X7					
1	X3	1X6					
28							