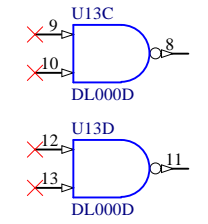
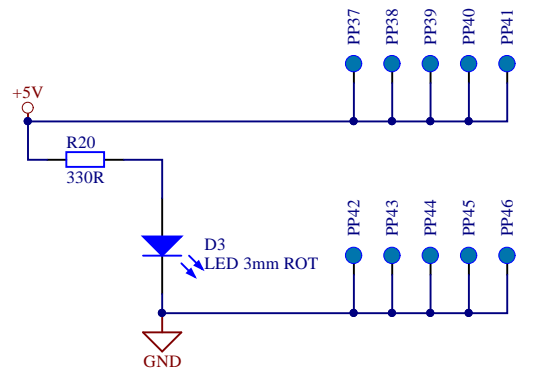
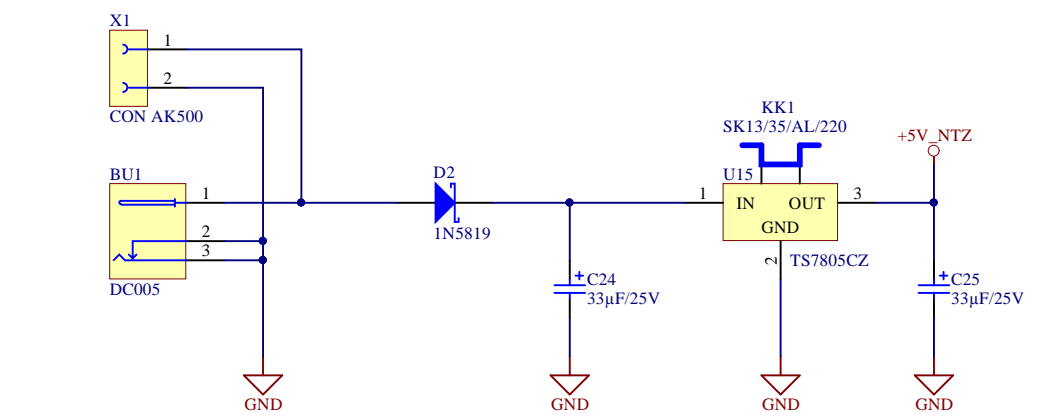
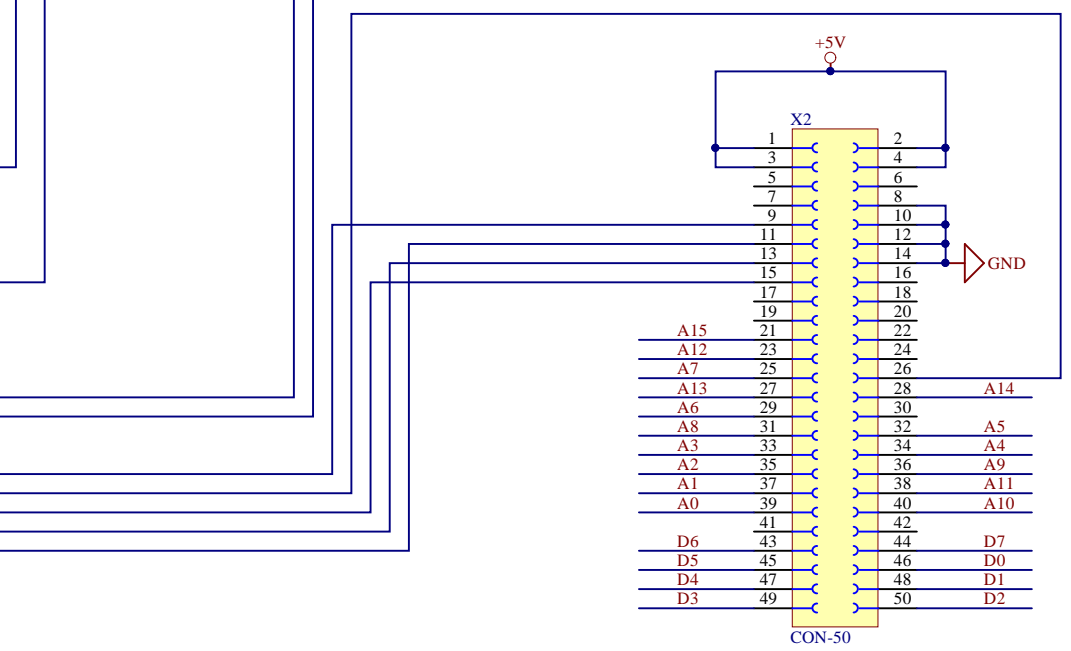
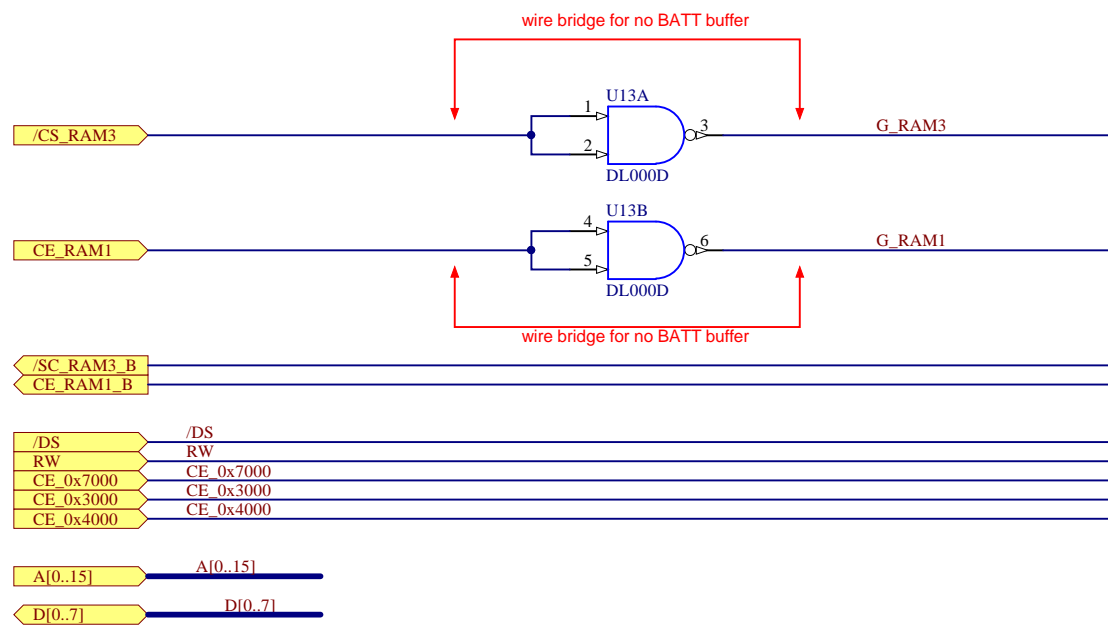
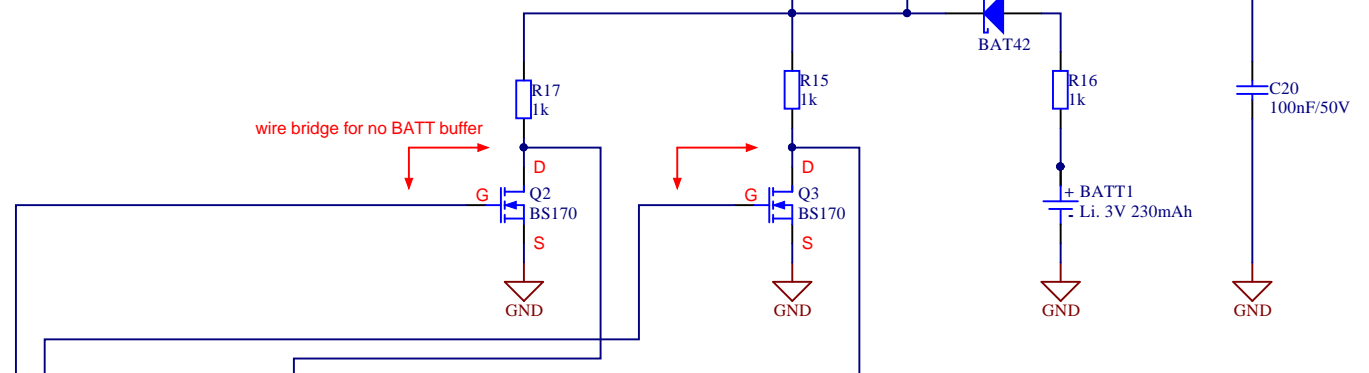


If the buffering of the two SRAM is not used, then eliminated following components:
U13, Q2,Q3,R17,R15,R16,D4,D5,C20,BATT1

a wire bridge over D4
a wire bridge over G-D for Q5 and Q3
a wire bridge over U13 pin 2-3 and pin 5-6



LP1 Bare-PCB LP
KL1 Small material Small material

